

SPRING 2010 EXHIBITIONS

Opening Celebration

SUNDAY, FEBRUARY 28
1PM TO 4PM

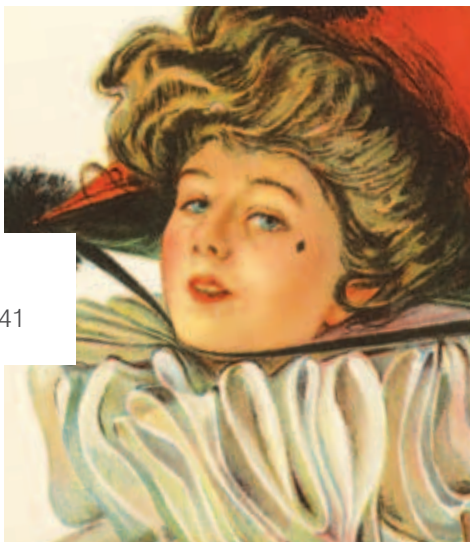
2pm Curator's Gallery Talk
by Suzanne Gold A&S '10

FREE. Reservations requested:
evergreenmuseum@jhu.edu or 410.516.0341

Phyllis Arbesman Berger, *View from Cap Frehel*
(detail), 2007. Giclée print on paper. Courtesy
of the artist

Playbill cover (detail), *The Casino Theatre*,
New York, 1910. Courtesy of the Evergreen
House Foundation

At right and on the cover: Meg Page, *Baltimore
Oriole in Catesby's Orchard* (detail), 2010.
Watercolor and walnut ink on paper. Courtesy
of the artist



EVERGREEN MUSEUM & LIBRARY
4545 N. Charles Street
The Johns Hopkins University
Baltimore, MD 21210
MUSEUMS.JHU.EDU

SPRING 2010 EXHIBITIONS

EVERGREEN
MUSEUM & LIBRARY

FEBRUARY 28 - APRIL 25

Exhibitions are on view as part of regular
guided museums tours, offered hourly
on the hour Tuesday - Friday, 11am - 3pm
and Saturday - Sunday, 12 - 3pm

museums.jhu.edu / 410.516.0341

Evergreen Museum & Library's exhibitions
program is supported by the Evergreen
House Foundation, and a grant from the
Maryland State Arts Council, an agency
dedicated to cultivating a vibrant cultural
community where the arts thrive.



MARYLAND
STATE ARTS
COUNCIL

JOHNS HOPKINS
UNIVERSITY

Printed on paper containing 100% recycled with 50% post-consumer fiber.



SPRING 2010

FEBRUARY 28 - APRIL 25

Exhibitions AT EVERGREEN



EVERGREEN
MUSEUM & LIBRARY
THE JOHNS HOPKINS UNIVERSITY

1 Stones, Sea, Sky: Celtic Landscapes

PHOTOGRAPHY BY PHYLLIS ARBESMAN BERGER

This exhibition of approximately 27 Giclée prints by photographer, teacher, and Maryland Institute College of Art graduate Phyllis Arbesman Berger celebrates the spectacular geologic forms that abound along the wild, unspoiled coastlines of Brittany, France and southwest Ireland. The works are a subjective representation of the artist's own profound experience with these surreal landscapes, places that are felt as much as seen.

Berger is creator of and instructor in the Johns Hopkins University Photography Program and is also an instructor in photography at the Maryland Institute College of Art School of Continuing Studies. She has been an artist-in-residence at the Château de Rochefort-en-Terre in Brittany, France, and much of the work for this show came from the time she spent there.



2 Decades of Change

ALICE GARRETT AND THE THEATRE, 1900–1952

Arts patron and philanthropist Alice Warder Garrett (1877–1952) held a lifelong passion for the performing arts; she attended plays frequently, collecting some 400 playbills and souvenir programs over five decades, and enjoyed entertaining friends, family, and her husband's diplomatic colleagues with song and dance performances staged in Evergreen's Léon Bakst-designed theatre. This focus show features key playbills from Mrs. Garrett's collection and examples of her scribbled "notes

to self" on costumes and stage sets, illuminating how theatre provided a means of self-expression, and even self-definition, separate but parallel to her role as ambassador's wife.

The exhibition has been organized by 2009 Evergreen Museum & Library student curator Suzanne Gold, a senior Writing Seminars major and Museums and Society minor in Johns Hopkins' Krieger School of Arts and Sciences.

Above: Playbill covers, from left to right: The Casino Theatre, New York, 1910; Balasco Theatre, New York, 1915; Hudson Theatre, New York, 1915. Courtesy of the Evergreen House Foundation

Left: Phyllis Arbesman Berger, *Moonrise over the Sentier des Douaniers, Ploumanach*, 2007. Giclée print on paper. Courtesy of the artist



HouseGuests

Evergreen's ongoing artist-in-residence series



3 Meg Page

NATURE IN AND OUT

Inspired by her love of nature as well as a long-held affinity for the art of botanical illustration, Baltimore-based artist Meg Page has created a series of paintings reinterpreting the tastes and interests of Evergreen's former Garrett family, her imagined clients. In works where master authors are quoted and forgotten environs are explored, Page captures both true nature and its ideal, as conveyed by the museum's art and rare book collections. Through her favored medium of watercolor, she poetically melds the reality and the ideal of what is *outside* into a unique walk through Evergreen's formal and intimate *inside* spaces.

A Towson native, Page majored in photography at the Cleveland Institute of Art and worked as a freelance illustrator before becoming a full-time artist. Her work has been featured in *Town and Country*, *Southern Living*, *Southern Accents*, and *Style* magazines. She is Evergreen's eighth *House Guest* artist-in-residence.

